

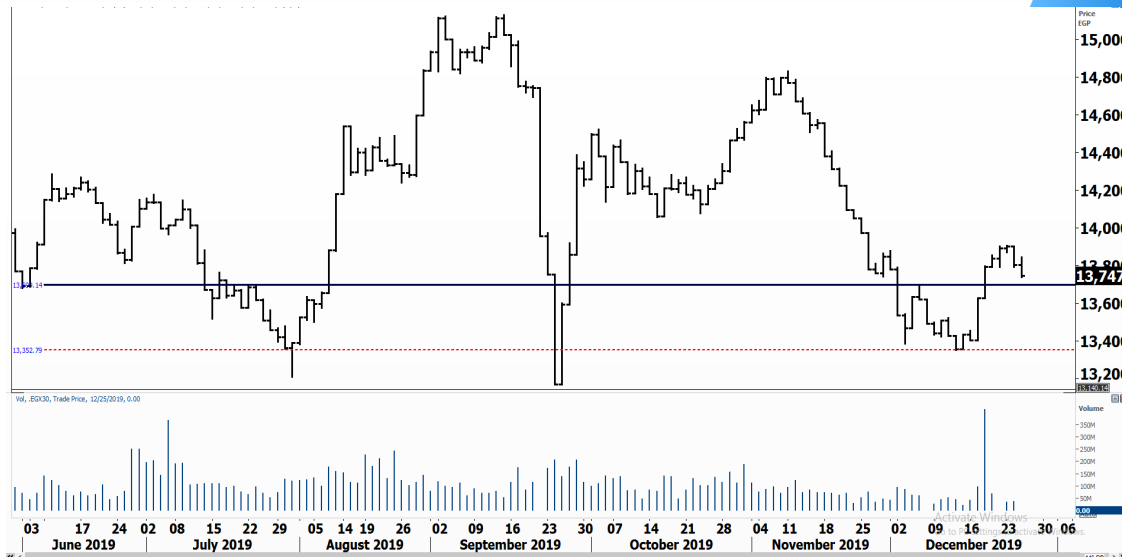


PIONEERSECURITIES

# TECH TO THE POINT

30-Dec-19

This report must be read with the disclaimer  
on the last page



Last	13,812.98
High Today	13,893.30
Low Today	13,811.38
Volume	M 45.475
First Support	13,700.00
Second Support	13,380.00
First Resistance	13,900.00
Second Resistance	14,100.00
Stop Loss	

HISTORICAL RETURN %	
1 WEEK	-0.57%
1 MONTH	-0.26%
1 QUARTER	-3.51%
1 YEAR	6.38%
YTD	5.96%

## Analysis

As usual, the market continued its weak performance, as buyers were out of the equation as has been the case since two full months. Those who are holding positions can use the newly formed minor bottom as their stop. The 13,750 level is a short-term stop and a break below it will lead the index back near 13,200-13,300. It is important to note that if the EGX 30 index approaches this support, it will probably violate it downwards, which will lead the market to much lower levels.

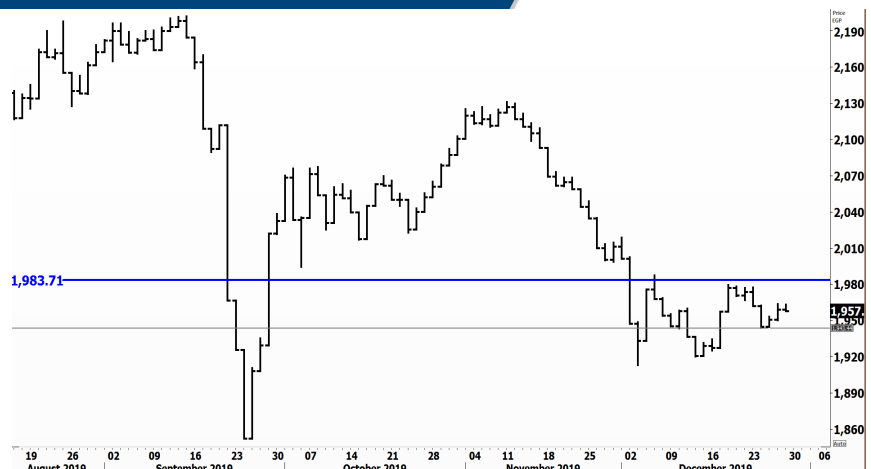
Our recommendation remains the same; to stay out of the market until clear strength appears.

## Egyptian Exchange Equal Weights Index EGX50


### Analysis

The 1,945 level is the EGX 50 minor bottom; a break below it will trigger a sell signal and a significant decline will probably follow.


As for buying opportunities, we do not recommend stepping in until we see confirmation of market strength. The first sign of strength is a clear break above 1,980; this breakout (if it occurs) will trigger a short-term buy signal. As long as the EGX 50 is trading below this level, staying out of the market is the best strategy.




## Resistance

**CCAP**  Broke 2.4 upwards, closing at 2.44 at the end of the session. Our problem with the stock is the overall market situation, so breakouts fail often. The stock, however, looks strong as it broke with high volumes, but we prefer to see persistence before stepping in.


## Support


**ESRS**  The stock confirmed its bearish break and is expected to challenge the 10.1 bottom. If the situation remains as it is, then a break below 10 will probably occur, which will lead the stock back near its major support.

**PHDC**  The inability to rise from the 1.8-1.82 support area is a negative signal for the stock. We will look at the 1.68 level as the first level to watch, but we can even see lower levels.

## Testing

### Support

**SWDY**  The 11.2 is a support for the stock; based on the current performance of SWDY, this support will probably be killed by sellers, which can lead the stock near 9.5. SWDY is already witnessing a major downtrend so it will probably reach lower levels.

**OIH**  Position holders are recommended to place their stop below 0.54 as a break below it will lead OIH near 0.5.

### Resistance

Symbol	S. Description	Last	Support 1	Support 2	Resistance 1	Resistance 2	Trend	Recommendation	Stop Loss/ Re-Entry
COMI.CA	COM INTL BK/d	81.90	80.70	79.30	83.40	85.00	↔	Hold	79.30
EAST.CA	EASTERN CO/d	14.90	14.60	14.30	15.65	16.20	↔	Hold	14.60
SWDY.CA	ELSWEDY ELECTR/d	11.20	11.20 *	10.90	11.75	12.00	↓	P.SELL	12.00
TMGH.CA	TALAT MOSTAFA/d	8.24	8.03	7.95	8.70	9.00	↓	P.SELL	8.70
SKPC.CA	SIDI KERIR PET/d	9.12	8.70	8.00	9.65	10.25	↓	P.SELL	10.25
EKHO.CA	EGYPT KUWAIT H/d	1.30	1.29 \$	1.26 \$	1.37 \$	1.40 \$	↓	P.SELL	1.37
HRHO.CA	EFG HERMES HOL/d	16.70	16.70 *	15.85	17.35	18.00	↓	P.SELL	18.00
ORAS.CA	ORASCOM CONST/d	100.25	99.00	96.50	103.00	106.00	↔	Hold	96.50
AMOC.CA	ALX MINERAL OI/d	3.70	3.55	3.30	3.97	4.10	↓	P.SELL	4.10
MNHD.CA	NASR CITY HOUS/d	4.85	4.68	4.45	4.95	5.20	↔	Hold	4.95
CIRA.CA	Cairo Investment & Real Estate	13.89	12.50	11.55	14.25	15.00	↑	Hold	12.50
OCDI.CA	6TH OCT DEV IN/d	13.45	13.30	12.99	14.60	15.20	↓	P.SELL	14.60
JUFO.CA	JUHAYNA FOOD I/d	8.50	8.00	7.70	9.20	10.00	↔	Hold	10.00
ESRS.CA	EZZ STEEL/d	10.55	10.12	9.60	11.50	12.40	↔	Hold	11.50
ETEL.CA	TELECOM EGYPT/d	10.20	10.00	9.60	10.75	11.00	↓	P.SELL	10.75
CCAP.CA	CITADEL CAPITA/d	2.44	2.23	2.10	2.55	2.62	↔	Hold	2.10
ISPH.CA	IBNSINA PHARMA	9.10	8.90	8.50	10.00	10.30	↔	Hold	8.90
PHDC.CA	PALM HILL DEV /d	1.80	1.80*	1.72	1.97	2.05	↓	P.SELL	1.97
CLHO.CA	CLEOPATRA HOSPITAL COMPANY	5.85	5.60	5.00	6.00	6.40	↔	Hold	6.00
HELI.CA	HELIOPOLIS/d	23.98	23.00	21.80	24.85	25.90	↓	P.SELL	25.00
CIEB.CA	CREDIT AGRICOL/d	44.00	40.00	38.00	45.00	47.00	↔	Hold	40.00
EGCH.CA	EGYPT CHEM IND/d	5.34	5.05	4.70	5.45	5.65	↔	Hold	5.05
EMFD.CA	EMAAR MISR DEV/d	2.84	2.71	2.65	2.80*	3.00	↔	Hold	2.65
OIH.CA	ORASCOM INVESTMENT HOLDING	0.55	0.54	0.52	0.59	0.62	↓	P.SELL	0.59
ORHD.CA	ORASCOM EGYPT/d	6.65	6.25	6.00	6.80	7.10	↔	Hold	6.80
EGTS.CA	EGYPTIAN RESOR/d	2.45	2.40	2.32	2.70	2.88	↔	Hold	2.40
ORWE.CA	ORIENTAL WEAVE/d	10.30	10.05	9.70	11.10	11.70	↔	Hold	11.10
IRON.CA	EGYPTIAN IR & /d	2.37	2.15	N.A	2.60	2.84	↓	P.SELL	2.60
ADIB.CA	ABU DHABI/d	12.13	11.50	11.00	12.50	13.00	↓	P.SELL	13.00

## Guidelines



**Bullish**



**Bearish**



**Neutral**

Trend: (Upgrade, Downgrade): Change in trend color refers to upgrade or downgrade in the trend relative to the previous trend direction. E.g. change from "↓ Down" to "↔ Flat" is considered an upgrade and vice versa.

Buy: Buy the full position.

P.Buy: Buy portion of a position

Hold: Don't Buy or sell.

P.SELL: Sell portion of a position.

Sell: Sell the full position.

Stop Loss: Completely exit the position (or) Re-entry in cases of Selling.

## Disclaimer

This report has been prepared according to the general data available for public, in accordance with the professional standards applied in that career to the best knowledge of the reporter. The recommendations mentioned are a guiding tool representing a professional opinion, and not granting any profits, consequently it is not obligatory for our valued customers and investors. Pioneers Securities©, Egypt shall not be liable for any direct, indirect, incidental, or consequential damages, including limitation losses, lost revenues, or lost profits that may result from these materials. Republishing this report or any of its contents is subject to prior approval; referring to the source is a must. Opinions expressed are subject to change without notice and may differ or be contrary to the opinions or recommendations of Pioneers Securities©, Egypt Research or the opinions expressed by other business areas or groups of Pioneers Securities©, Egypt as a result of depending solely on the historical technical behavior (price and volume).

## Technical Analysis Department

### Saleh Nasser

Chief Technical Strategist

### Ahmed Hassan

Senior Technical Analyst

### Dina Fahmy

Senior Technical Analyst

### Tips on reading the report

The first page includes an analysis of two major indices in the Egyptian Stock Market; the norm is that we will analyze both the EGX 30 and 70, but sometimes we will compare the EGX 30 to its 50 counterpart if there is important information in this comparison. We also use the Hermes Last Index interchangeably with the EGX 30. The .HRMSL index has an important edge; it uses last prices instead of VWAP. First thing our clients should do is to read the indices analysis carefully to have a clear understanding on our overall view.

The second page includes stocks that broke out beyond their resistance levels, and those that violated their support levels. It also includes stocks that are testing their support levels and those that are testing their resistance. This analysis is important and it is the core of our recommendations. It is important to note though that not all stocks that are testing their support levels are bullish, and not all that are testing their resistance levels are bearish. To make it easier for our clients, we have placed a bull face 🐮 if we consider the stock under study bullish, and a bear face 🐻 if we consider it bearish. We also added a big bullet 🟩 if we are neutral.

It is important to note that you might find a stock that we consider bullish in our analysis (in the breakouts/testing section) but it remains as a hold or partial sell in the table. The conflict here is that the table is more conservative. This will not be an issue with our clients, because our analysis will explain why we are being bullish/bearish on the stock.